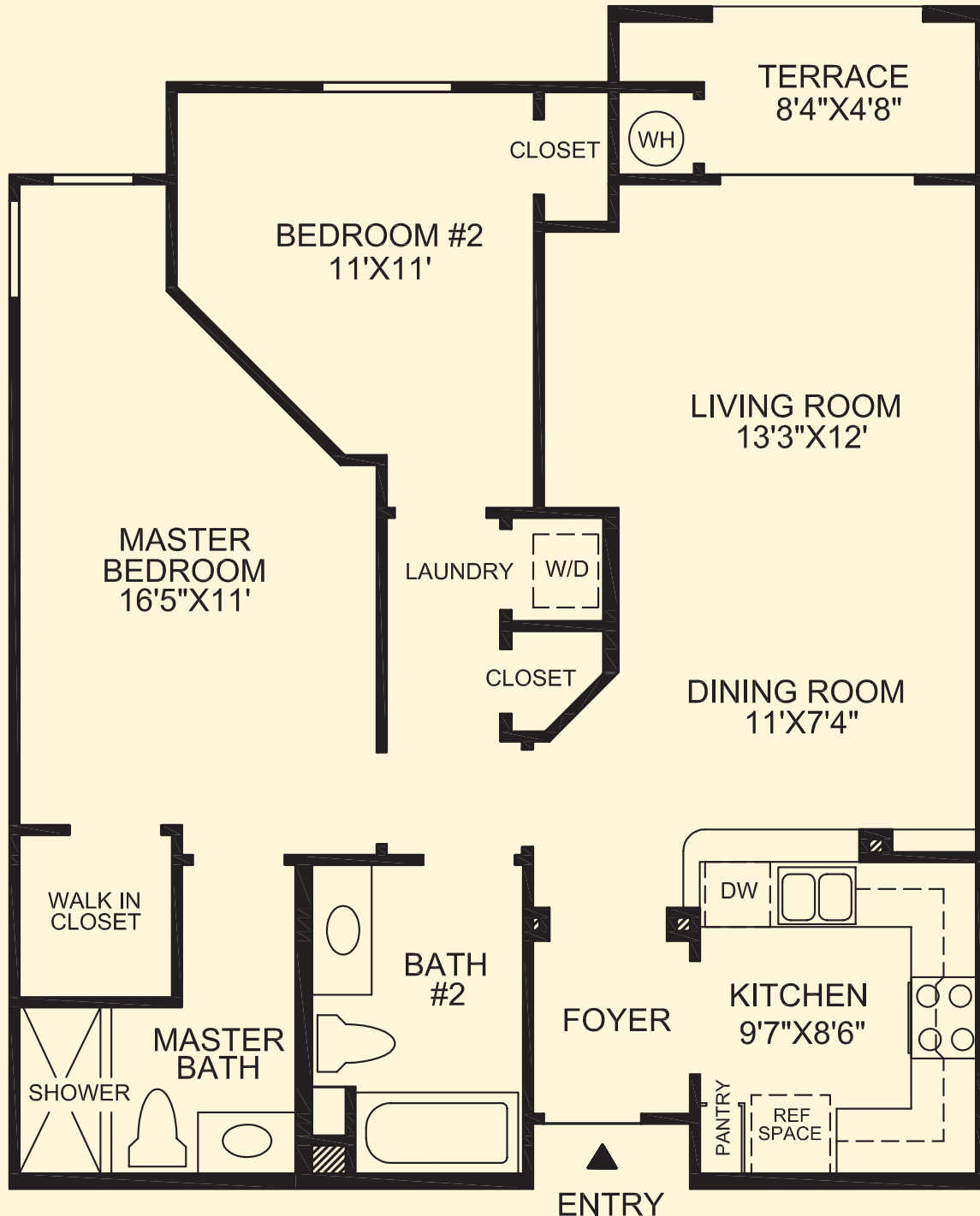


# THE PALENCIA

With 2 bedrooms and 2 full bathrooms, the Palencia is cultured and comfortable. The generous living and dining rooms and covered outdoor terrace are ideal for entertaining. The sleek kitchen features a large breakfast bar and a pantry, and the central laundry area provides convenience. The master bedroom with a spacious walk-in closet is complemented by a sumptuous master bathroom with a dual-sink vanity, a separate shower, and a garden tub.



MAIN LEVEL

## THE TERRACES

*Dublin Ranch*

TheTerracesAtDublinRanch.com • 925-479-9611



The information provided here is subject to change without notice. All dimensions are approximate, shown to the maximum dimensions of each room, and are subject to field variation. Dimensions should not be used to calculate room square footage. Interior features including but not limited to ceiling heights and exterior features including but not limited to windows, doors, balconies and patios, storage rooms, and floorplan configurations may vary from unit to unit and floor to floor. Features may also vary from community to community. Please consult a sales representative for details. Options purchased must be specified in Exhibit B. The floorplans and elevations of Toll Brothers homes are copyrighted. We have enforced and will continue to enforce our federal copyrights to protect the investment of our home buyers. This is not an offering where prohibited by law. DRT-11360-11360 6/08

